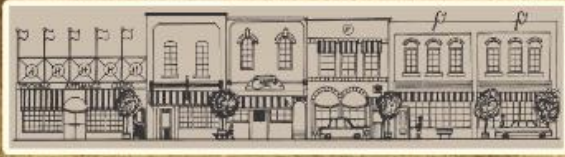


## # 6 – The Train Station



# Historic HENSALL



*Sponsored by*



**Easy Building  
Products Ltd.**

See item #6 at  
[www.VillageofHensall.com](http://www.VillageofHensall.com)

In the early 1870's, amid rumours of a proposed Grand Truck Railway to run from Wingham to London, the Petty brothers purchased the south half of Lot 21, Concession 1 in Hay Township.

The Petty Brothers recognized the value of a railway yard and station, and by offering land that was selling at \$80 an acre free to the railway with the stipulation that the railway run through their section of land to be known as Hensall, they brought both to Hensall!

The terms of the agreement settled, work on the railway was undertaken and the first train ran from London to Wingham on January 10, 1876 with the official opening of the 'London Huron & Bruce' being held the following day. For many years, train watching became an afternoon amusement.

The London Huron & Bruce line then brought four passenger and two freight trains past the Hensall station each day. Farm wives transported product to Covent Garden Market in London each morning on the 8:22 a.m. train, leading to the nickname 'The Butter and Egg Express'. High school students commuted to Clinton Collegiate by means of the train.

The train station, being a two-storey, frame building erected on tall cedar posts with a platform level with the box car doors and a ramp at the end for pedestrians, was somewhat of an oddity by today's standards.

The ticket office and waiting room were up seven or eight steps and freight and express goods were

stored in the lower part. The small waiting room featured benches on two walls, a large stove in the centre and a small railed platform at the top of the steps.

